



# CORRY CLIMAX & CORSETS ARTS & INNOVATION FESTIVAL

CALL FOR SUBMISSIONS: ARTISTS & INNOVATORS



A photograph of a wooden table with a rustic, weathered appearance. The table is supported by a complex metal structure made of pipes and fittings. A large metal gear is visible in the bottom right corner, partially obscured by the table's edge. The background is a light-colored, textured surface, possibly concrete or stone.

CORRY  
CLIMAX &  
CORSETS  
ARTS &  
INNOVATION  
FESTIVAL

2021 Design  
Challenge

# 2021 DESIGN CHALLENGE: *THE BENCH*

## The BENCH redefined by innovation, authenticity, and remarkability

### Design challenge elements:

- Embrace rust, reuse, and sustainability
- Create artworks that compel people to sit, recline, peddle, lounge, engage, interact, etc.
- Provide multiple vantages for Selfies and Usies
- Promote comfort, function, and access
- Honor local Victorian-era origins & industry past, present, and/or future (materials, processes, techniques, patterns, etc.)
- Tell a story people want to hear
- Integrate tech and innovation
- Serve multiple purposes or uses (workstations, bike racks, charging stations, area lighting, solar panels, etc.)
- Encourage a sense of place, enhance wayfinding, wellness, and safety
- Vibe with downtown aesthetic of Steampunk meets Fourth Industrial Revolution



CORRY  
CLIMAX &  
CORSETS  
ARTS &  
INNOVATION  
FESTIVAL

The Details

# THE DETAILS

Competition Announcement: 6 p.m. – First Friday August 6, 2021 - Impact Corry Office, 4 S. Center Street, Corry, PA 16407

Entry Deadline: 5 p.m. – October 29, 2021 - Impact Corry Office, 4 S. Center Street, Corry, PA 16407

Award Announcement: 6 p.m. – First Friday November 5, 2021 - Impact Corry Office, 4 S. Center Street, Corry, PA 16407

Join by Zoom Meeting <https://zoom.us/j/92693952731> Meeting ID: 926 9395 2731

Final Design/Build/Technology Integration: November 6, 2021 – February 25, 2022

Build: February 26, 2022 – June 3, 2022 --- Unveiling of Works: 6 p.m. – First Friday June 2022

Installation: June 4, 2022 - August 4, 2022

Celebration of Works & Corry Climax & Corsets Arts & Innovation Festival: 6 p.m. – First Friday August 5, 2022 –

Once received, all entries will be reviewed anonymously. Winners will be selected by a panel of artists, designers, and urban planners not affiliated or related to any entrant. Winning artists will receive \$250.00 for their entries. Non-awarded artists may claim their entries between 7 and 8 p.m. on November 5, 2021. Entries of awarded artists become property of the festival. Artists completing final design/build/technology integration phase will receive \$250.00. Artists wishing to assist or complete the build of their bench will receive stipend based on scope and scale of work.

Awarded artists are invited to attend all project milestones and are required to attend: Unveiling of Works June 3, 2022 & Celebration of Works & Corry Climax & Corsets Arts & Innovation Festival (C3AIF) August 5, 2022. Awarded Artists are required to be interviewed by project video documentarian and be accommodate project photo documentarians, consult with accessibility and green space champions, and participate in publicity.



**CORRY  
CLIMAX &  
CORSETS  
ARTS &  
INNOVATION  
FESTIVAL**

**The Place**



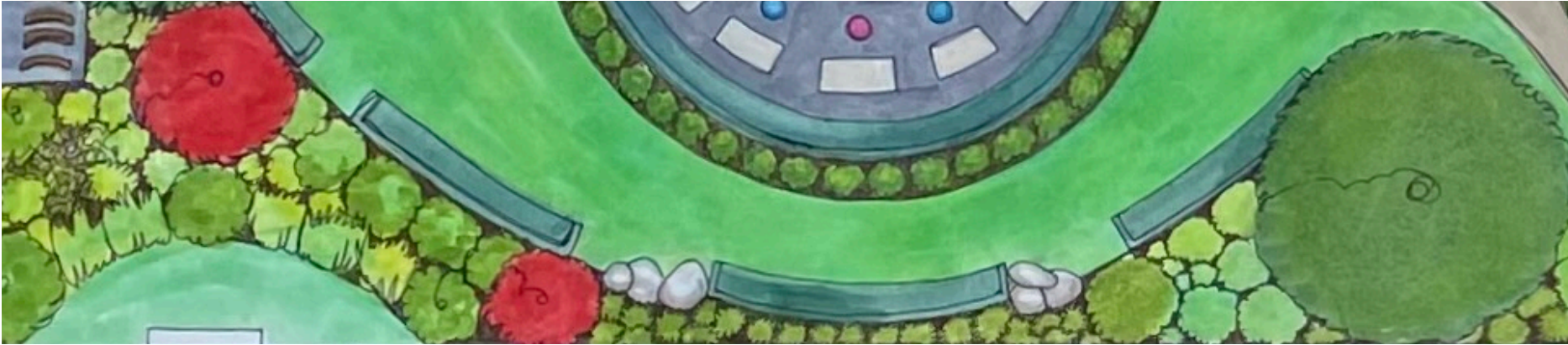
# CORRY RAILS + TRAILS PARK

East Side of the Corry Rails + Trails Park

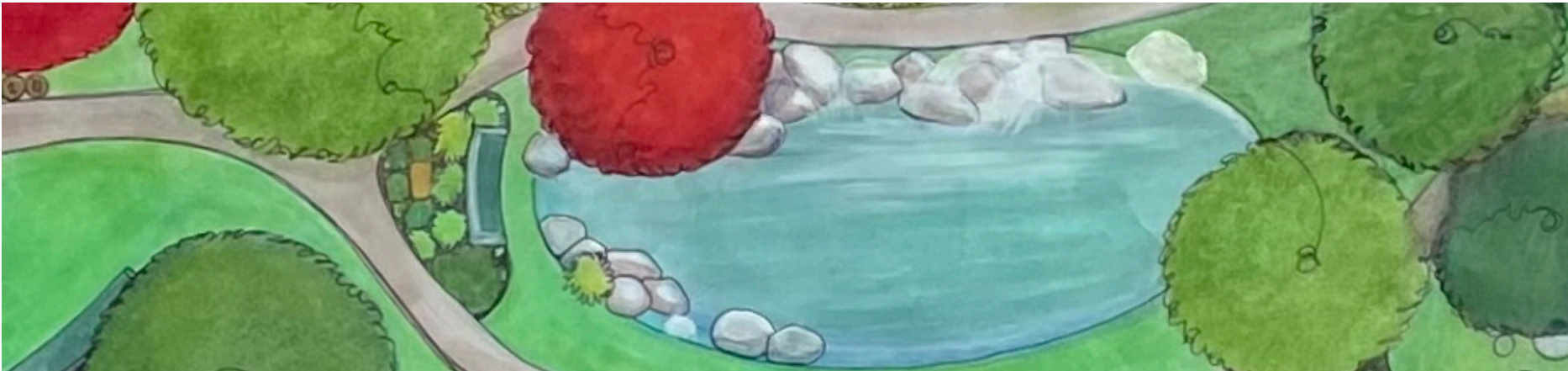


Benches depicted show relative size and placement.  
They are not intended to dictate size, shape, height.  
Let your imaginations run wild.





Challenge One: Total length 48' – Seating/reclining area with seating in 3 groupings  
3, 6, or more component pieces – Seat depth 18 – 20”  
Overlooking typewriter-themed gazebo, downtown mural, tulip chairs



Challenge Two: Total length 8' – Seating area  
1 or more component pieces – Seat depth 18 – 20”  
Overlooking pond, trees, walking trails





Challenge Three: Total length 48' – Seating/Eating/Gathering area with mixed seating in 3 groupings  
3, 6, or more component pieces, minimum 6 stools, 3 tables – Seat depth 18 – 20" – possible shade options  
Multiple view angles overlooking pond, fountain, sculpture, Erie to Pittsburgh Trail, Route 426



Challenge Four: Total length 24' – Seating area with 5 bench positions  
6 or more component pieces – Seat depth 18 – 20"  
Multiple view angles overlooking fountain, pollinator gardens, tree, Erie to Pittsburgh Trail, Route 426



**CORRY  
CLIMAX &  
CORSETS  
ARTS &  
INNOVATION  
FESTIVAL**

**ENTRY FORM**



# ENTRY FORM

Artist/s:

Email:

Phone Number:

Address:

Name & Work Media:

Philosophy:

Entry Artwork:

Intended for consideration for Design Challenge #\_\_\_\_\_

Story/Description:

Intended Materials:

Innovation:

Please attach any press, images of work, resumes, websites, etc. you would like to have considered in review

All entries must be submitted by 5 p.m. on October 29, 2021 with completed entry form as well as sufficient renderings, 3D model, technical drawings, mood board, descriptions, technology elements, etc. as desired by artist to communicate design concept. Please email to arrange a drop off time for entry at [director@impactcorry.com](mailto:director@impactcorry.com). Drop off entries to 4 South Center Street, Corry, PA 16407